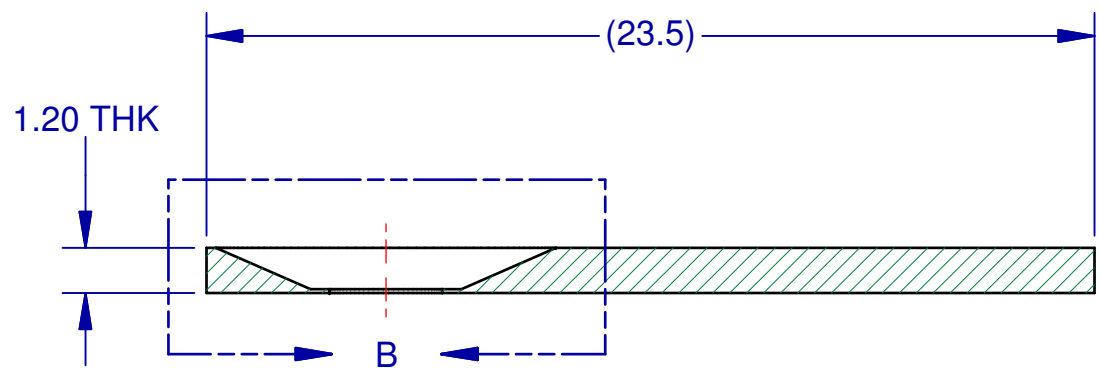
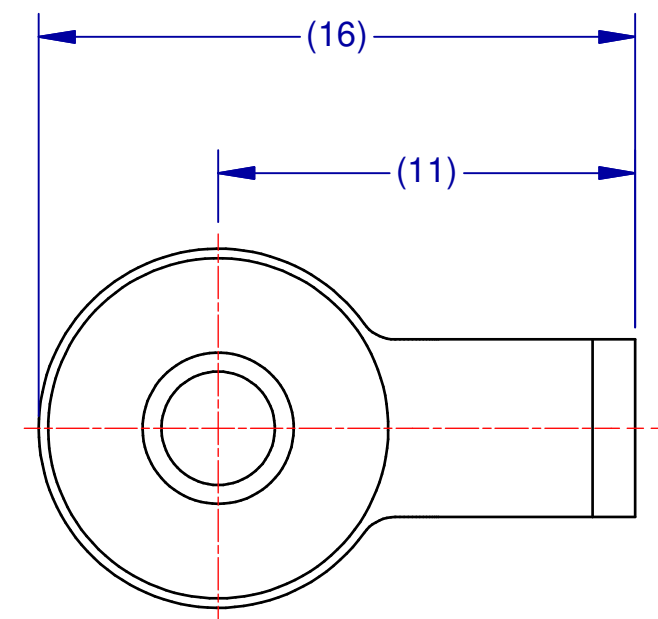
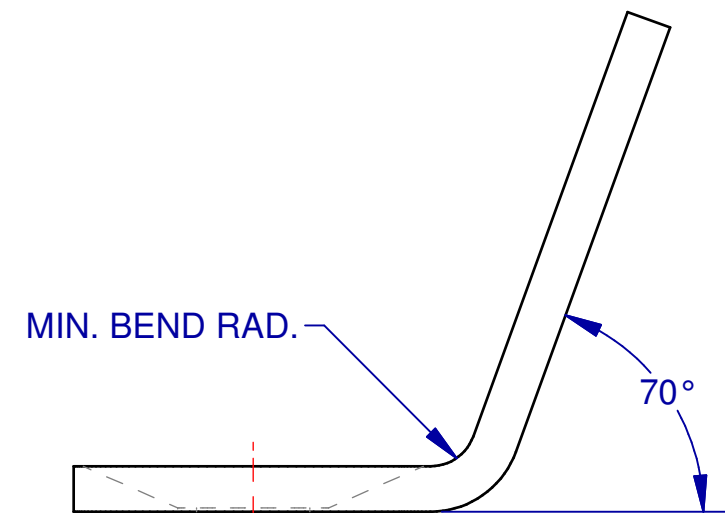
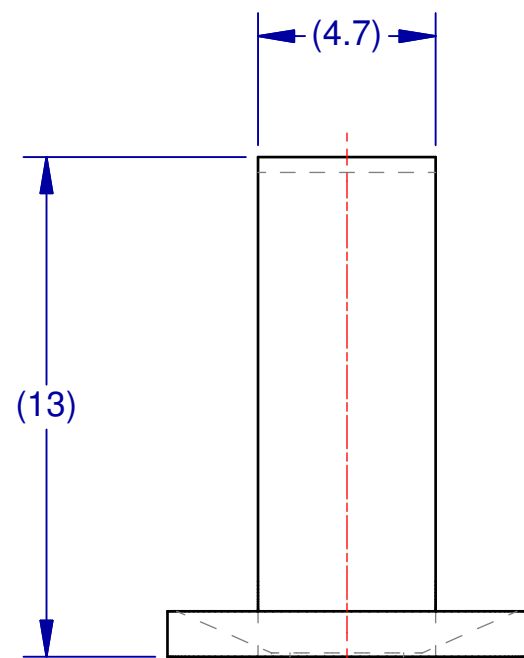


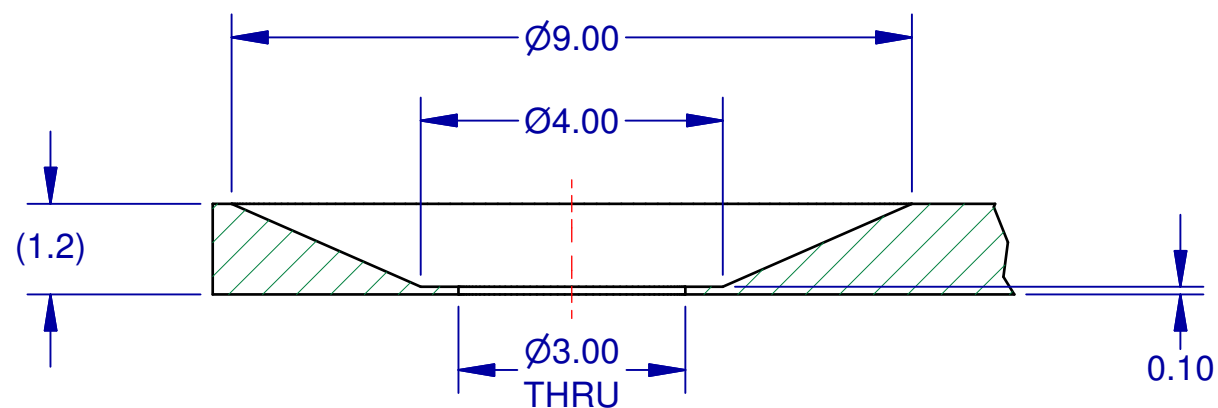
ISOMETRIC VIEW



SECTION A-A



FOLDED VIEWS



DETAIL B

<p>THIRD ANGLE</p>	<p>DESIGNED IN MILLIMETERS</p>	<p>MACHINING TOLERANCES UNLESS OTHERWISE SPECIFIED</p>		<p>SURFACE TREATMENT</p> <p>N/A</p>	<p>DO NOT SCALE</p>		<p>MOTOR CORTEX HEADPOST</p> <p>316 STAINLESS STEEL</p> <p>(FLAT PATTERN &amp; FOLDED)</p>	<p>SHEET 1 OF 1</p>	<p>REV: 01</p>
	<p>DIMENSIONAL UNITS</p> <p>MILLIMETERS [INCHES]</p>	<p>0. [.X]</p> <p>± 2.5 = [.1]</p>	<p>ANGLES</p> <p>± 0.5°</p>	<p>MATERIAL &amp; HEAT TREAT</p> <p>ST/ST</p>	<p>DRAWN BY:</p> <p>NIKK HORNE</p>	<p>DATE</p> <p>8 Feb 11</p>			
<p>MACHINED FILLET RADII 0.38-1.27 [.015-.050]. BREAK ALL SHARP EDGES 0.2-0.8 [.01-.03] RADII OR 45°. SURFACE FINISH IN MICRO (μ) INCHES (Ra). INTERPRET DRAWING PER ASME Y14.5, ASME Y14.36, AND AWS A2.4 STANDARDS. SEE B/M FOR MATERIAL AND SPECIAL REQUIREMENTS. ITEM NUMBERS NOT APPEARING ON B/M DO NOT APPLY.</p>	<p>0.X [.XX]</p> <p>± 0.5 = [.02]</p>	<p>125 RA ON ALL MACHINED SURFACES</p>	<p>ESTIMATED WEIGHT:</p> <p>0 LBS 0 KG</p>	<p>CHECKED BY:</p> <p>I. DUGUID</p>	<p>DATE</p> <p>8 Feb 11</p>	<p>INITIAL USE B/M:</p> <p>N/A</p>	<p>N/A</p>	<p>1 OF 1</p>	<p>01</p>
	<p>0.XX [.XXX]</p> <p>± 0.13 = [.005]</p>		<p>APPROVED BY:</p> <p>P. PUGGIONI</p>	<p>DATE</p> <p>8 Feb 11</p>					
	<p>0.001 [.0005]</p>	<p>DATE</p> <p>8 Feb 11</p>							